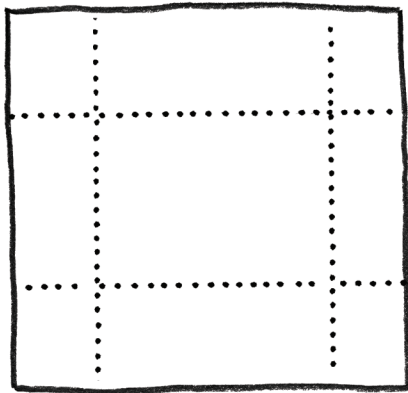
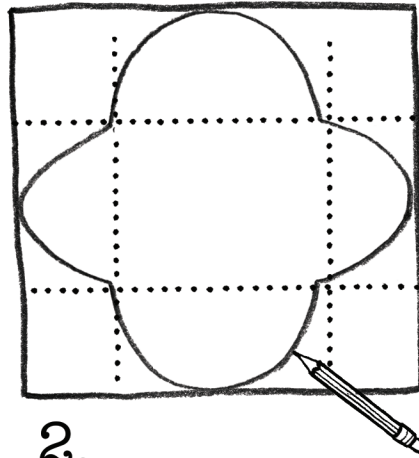


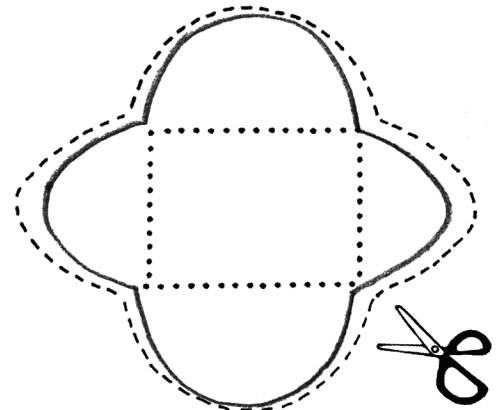
Let's Make an Envelope!



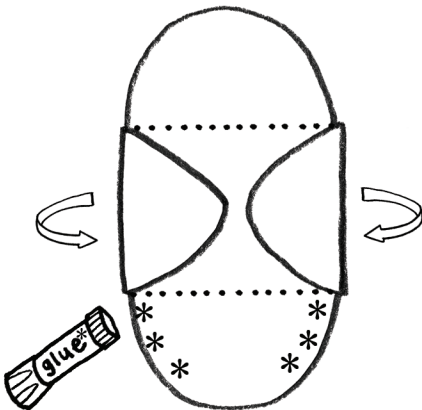
1. crease along dotted line



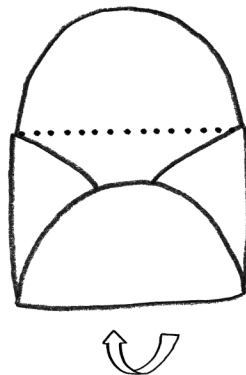
2.



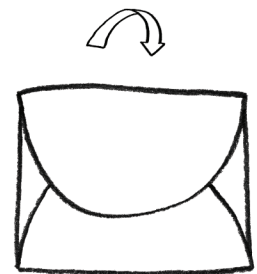
3.



4.



5.



6.

Use any paper - including paper that's already printed on one side!

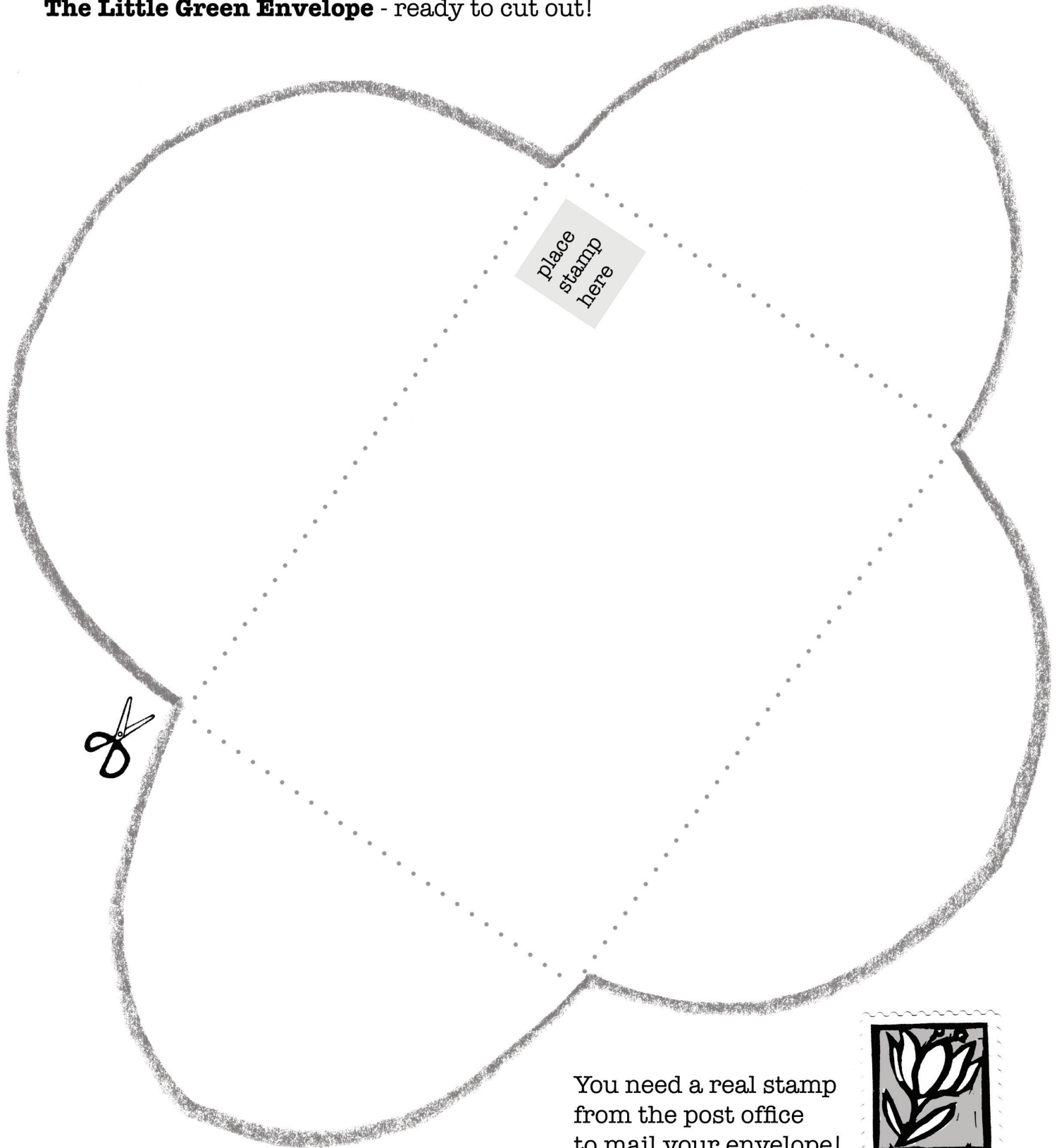
This is the shape of **The Little Green Envelope** - with rounded flaps.

There are many different types of envelopes.

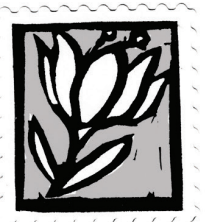
Learn more about envelopes by carefully taking apart used envelopes.

Trace them to make templates for cutting out your very own!

Use instructions on page one to use any piece of paper
Here's an easy one that's shaped like
The Little Green Envelope - ready to cut out!



You need a real stamp
from the post office
to mail your envelope!



www.claudinecrangle.com